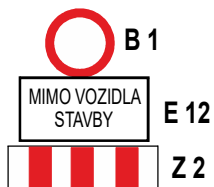


# Dopravní značky

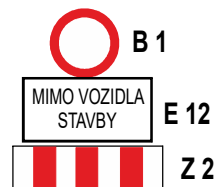
při uzavírce sil. III/186 14 (Třebomyslické ul.) v Horažďovicích  
v úseku od křižovatky se sil. I/22 na konec obce  
a na objížděkové trase.

## příloha č. 3

začátek uzavírky sil. III/186 14



konec uzavírky sil. III/186 14



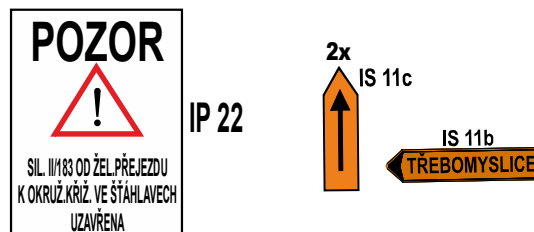
1x z boční ulice



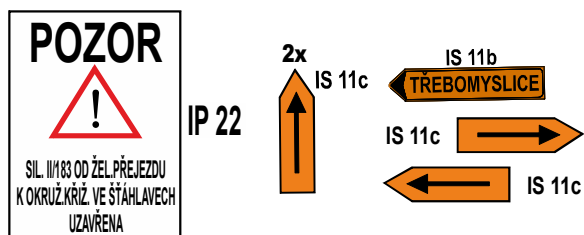
Horažďovice sil. I/22



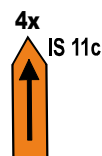
křiž. sil. I/22 a II/169 od Rabí



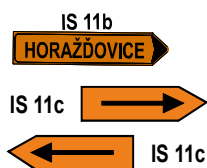
Malý Bor křiž. sil. I/22 a III/186 28



Břežany křiž. sil. III/186 28 a III/186 24



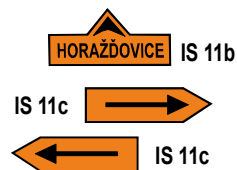
Velešice křiž.sil. III/186 24 a III/186 25



Pačejov křiž.sil. III/186 24 a III/196 14



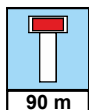
IP 22



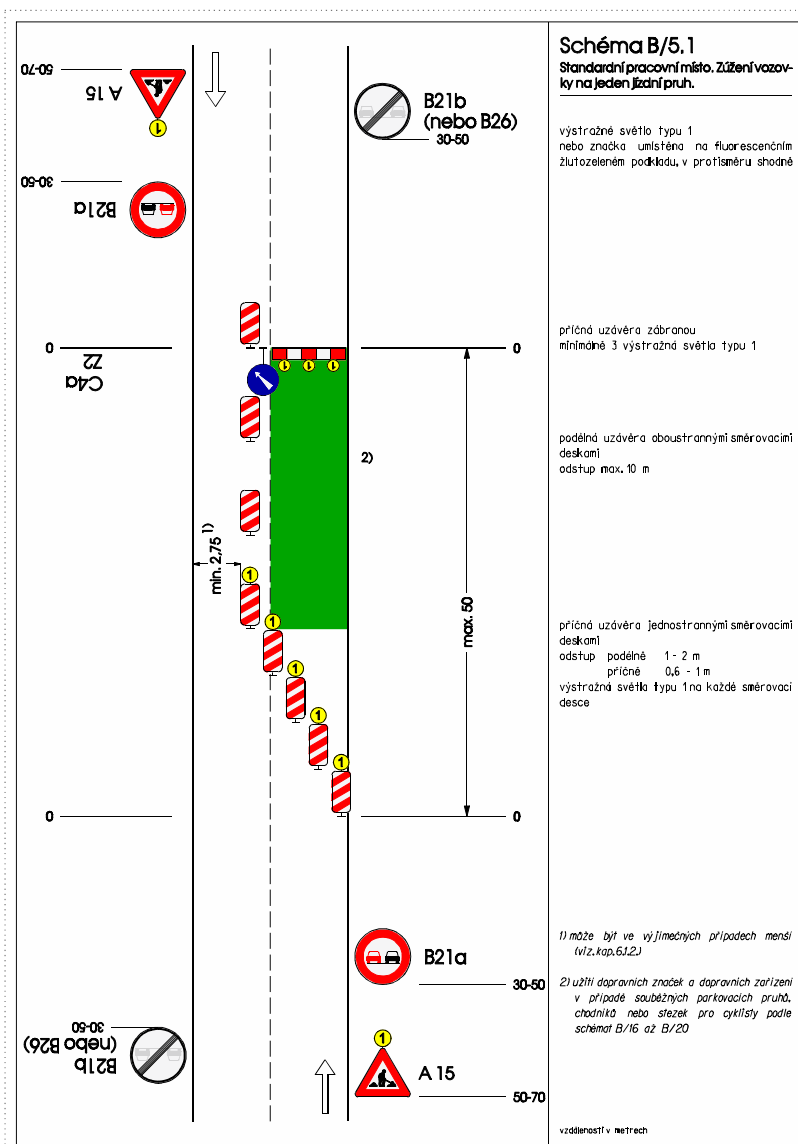
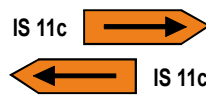
Třebomyslice sil. III/186 14



IP 22



IP 10a  
E 3a



### SOUPIS POUŽITÝCH DOPRAVNÍCH ZNAČEK

|                       |   |                |
|-----------------------|---|----------------|
| <b>A 15</b> .....     | <b>2x</b> .....   | <b>2 sl.</b>   |
| <b>B 1</b> .....      | <b>3x</b>   |                |
| <b>B 21a</b> .....    | <b>2x</b> .....   | <b>2 sl.</b>   |
| <b>B 26 (21b) ...</b> | <b>2x</b> .....   | <b>2 sl.</b>   |
| <b>C 4a</b> .....     | <b>1x</b>   |                |
| <b>IP 10a</b> .....   | <b>1x</b> .....   | <b>1x sl.</b>  |
| <b>IS 11b</b> .....   | <b>4x</b> .....   | <b>4x sl.</b>  |
| <b>IS 11c</b> .....   | <b>17x</b> .....  | <b>17x sl.</b> |
| <b>IP 22</b> .....    | <b>5x</b> .....   | <b>10x sl.</b> |
| <b>E 3a</b> .....     | <b>1x</b>   |                |
| <b>E 13</b> .....     | <b>3x</b>   |                |
| <b>Z 2</b> .....      | <b>4x</b>   |                |
| <b>Z 4</b> .....      | <b>9x</b>   |                |
| <b>S 7</b> .....      | <b>1 světlo na A 15 ... 2x</b><br><b>3 světla na Z2+Z4 ... 2 sady</b> |                |